

D E W A F E L B A K K E R S



THE PERFECT ENERGIZING BREAKFAST!

No syrup needed

Ovenable Packages
Easy Open – Heat and Serve

Meets or Exceeds
USDA standards

No Artificial Ingredients

Attractive, Colorful
Packaging

*Ideal for Breakfast
in the Classroom*

Strawberry



Individually Wrapped Strawberry Flavored Whole Grain Mini Pancakes

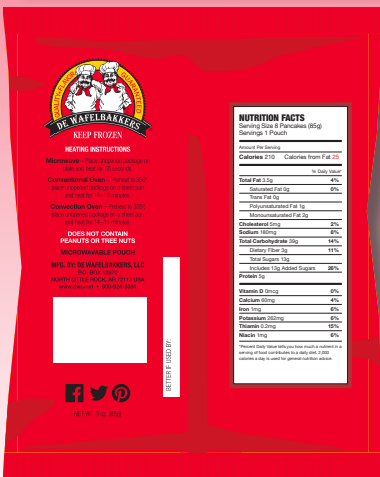
Naturally Flavored

CODE NUMBER:
631

PORTION SIZE:
3 oz (85g)

PACK SIZE:
72

GRAIN EQUIVALENCY:
1 Package = 2.0



NUTRITION FACTS

Serving Size 8 Pancakes (85g)
Servings 1 Pouch

Amount Per Serving

Calories 210

	% Daily Value*
Total Fat 3.5g	4%
Saturated Fat 0g	0%
Trans Fat 0g	
Polyunsaturated Fat 1g	
Monounsaturated Fat 2g	
Cholesterol 5mg	2%
Sodium 180mg	8%
Total Carbohydrate 39g	14%
Dietary Fiber 3g	11%
Total Sugars 13g	
Includes 13g Added Sugars	26%

Protein 5g

Vitamin D 0mcg	0%
Calcium 60mg	4%
Iron 1mg	6%
Potassium 262mg	6%
Thiamin 0.2mg	15%
Niacin 1mg	6%

*Percent Daily Value tells you how much a nutrient in a serving of food contributes to a daily diet. 2,000 calories a day is used for general nutrition advice.

INGREDIENTS: Water, Whole Grain Wheat Flour, Unbleached Enriched Flour (wheat flour, malted barley flour, niacin, reduced iron, thiamine mononitrate, riboflavin, folic acid), Sugar, Strawberry Flavored Bits (sugar, soybean oil, whole grain wheat flour, strawberry powder, fruit juice color, natural flavor, citric acid), Canola Oil, Eggs, Leavening (sodium acid pyrophosphate, potassium bicarbonate, sodium bicarbonate, monocalcium phosphate) Buttermilk Solids, Natural Flavor, Soy Lecithin, Sea Salt.

Contains: Wheat, Egg, Dairy, Soy

MANUFACTURED IN A FACILITY WHICH DOES NOT USE PEANUTS OR TREE NUTS.

CASE INFORMATION:

Bag UPC: 679844 10631 2
Case UPC: 00 679844 10631 7
Unit Size: 3 oz (85g)
Case: 72 ct
Cases Per Pallet: 56
Gross Wt: 14.5 lbs
Net Wt: 13.5 lbs
Case Height: 9.4375"
Case Length: 19.5"
Case Width: 10.75"
8 Tie x 7 High
Shelf Life: 1 Year Frozen

For more information, contact:

Geoff Weaver
National Sales Manager (West)

Linda Benyo
National Sales Manager (East)

Phone: 360-860-2141 • Email: gweaver@dwb.net Phone: 864-363-2841 • Email: lbenyo@dwb.net

www.dwbfoodservice.com